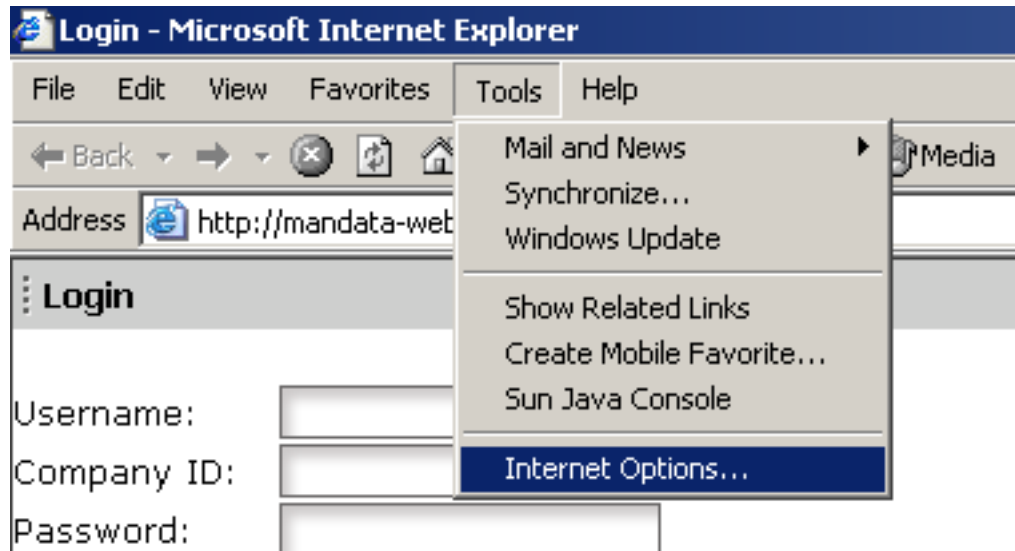
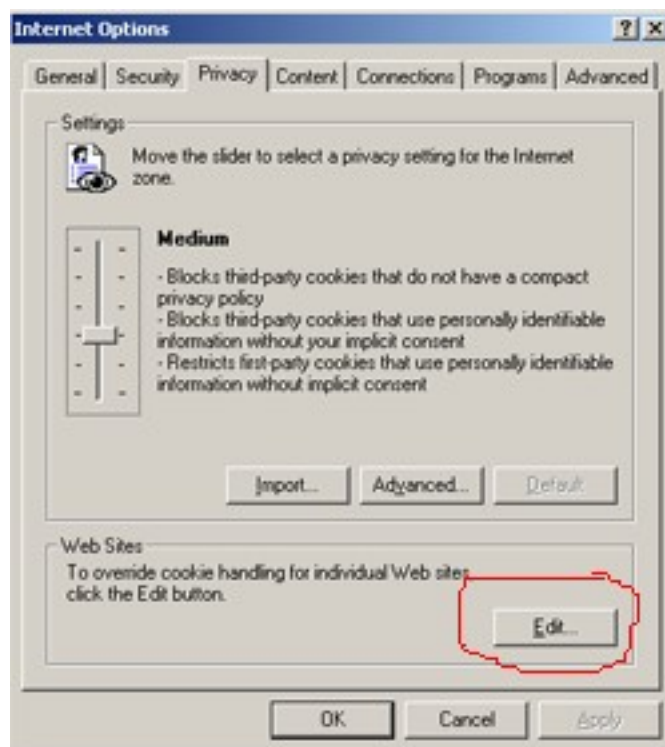


Windows 2000

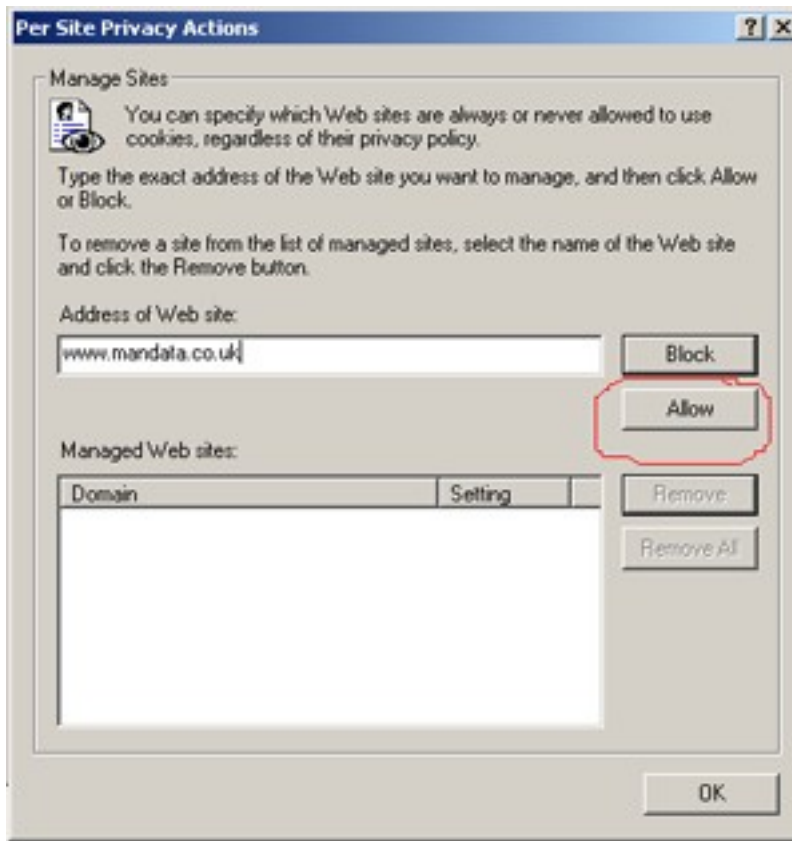
1. Open up Internet Explorer
2. Choose **Tools** from the menu
3. Choose **Internet Options** from the menu



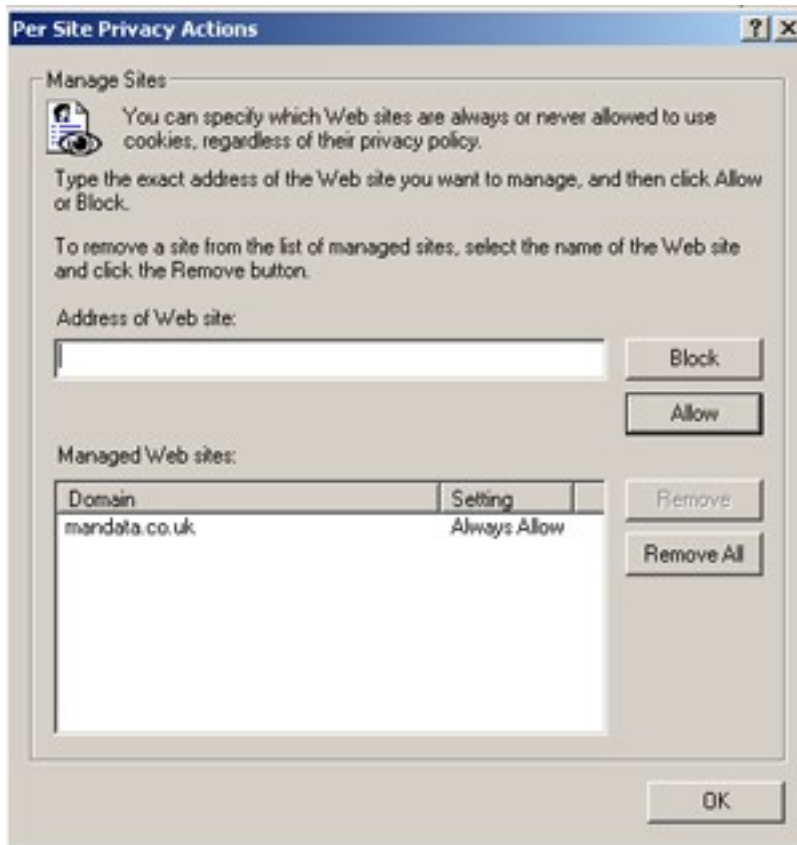
4. Select the **Privacy** tab and press the **Edit** button



5. Enter www.mandata.co.uk and as.mandata.co.uk into the address field and press **Allow**



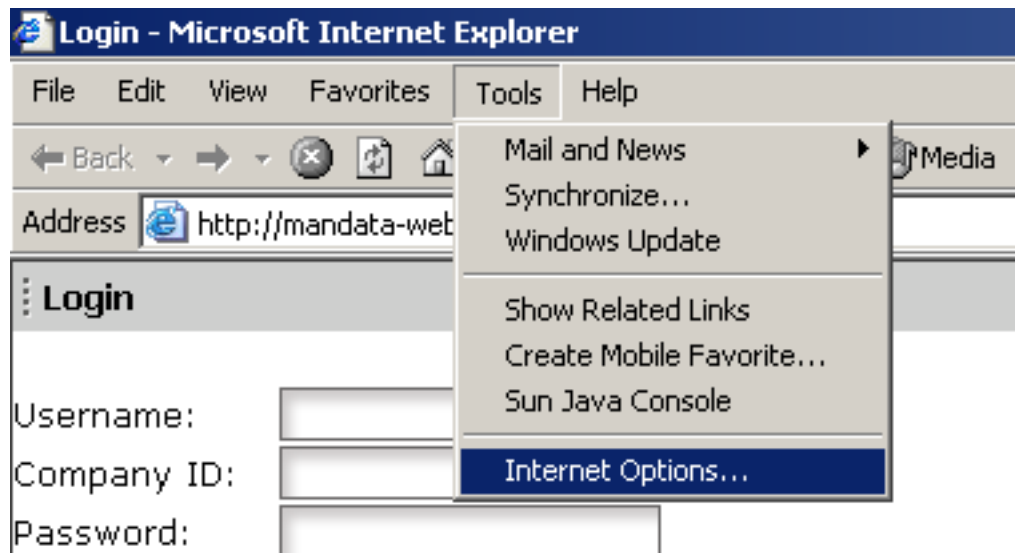
6. The address will appear in the Managed Web Sites section below



7. You may also need to add <http://as.mandata.co.uk> to the Managed Websites list. Once you have done this press **OK** then **OK** again to exit.
8. Close the browser then re-open and try to access the site again as normal.

WindowsXP

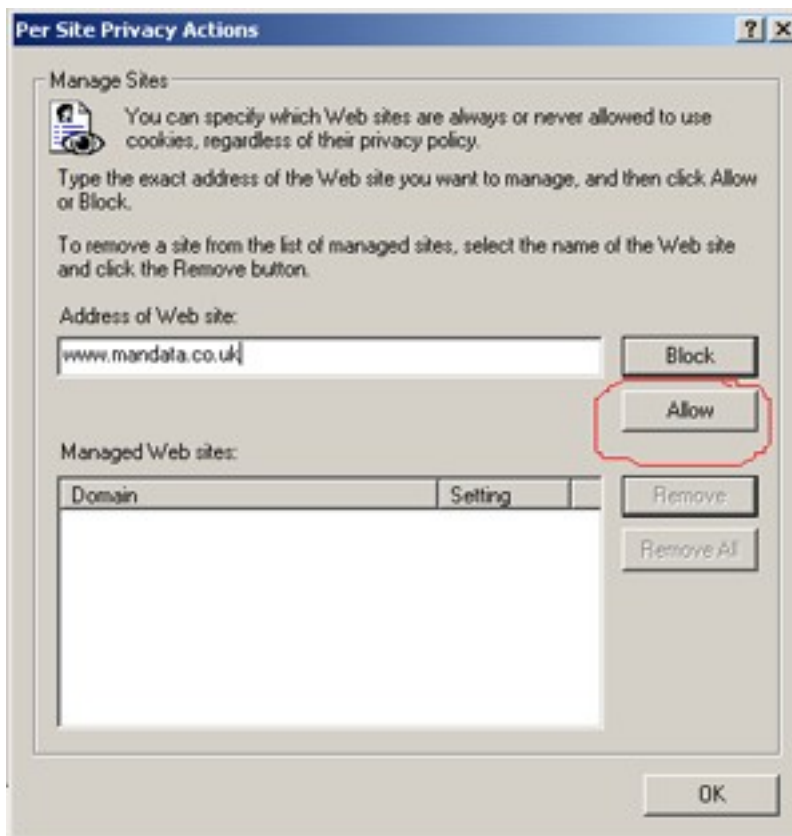
1. Open up Internet Explorer
2. Choose **Tools** from the menu
3. Choose **Internet Options** from the menu



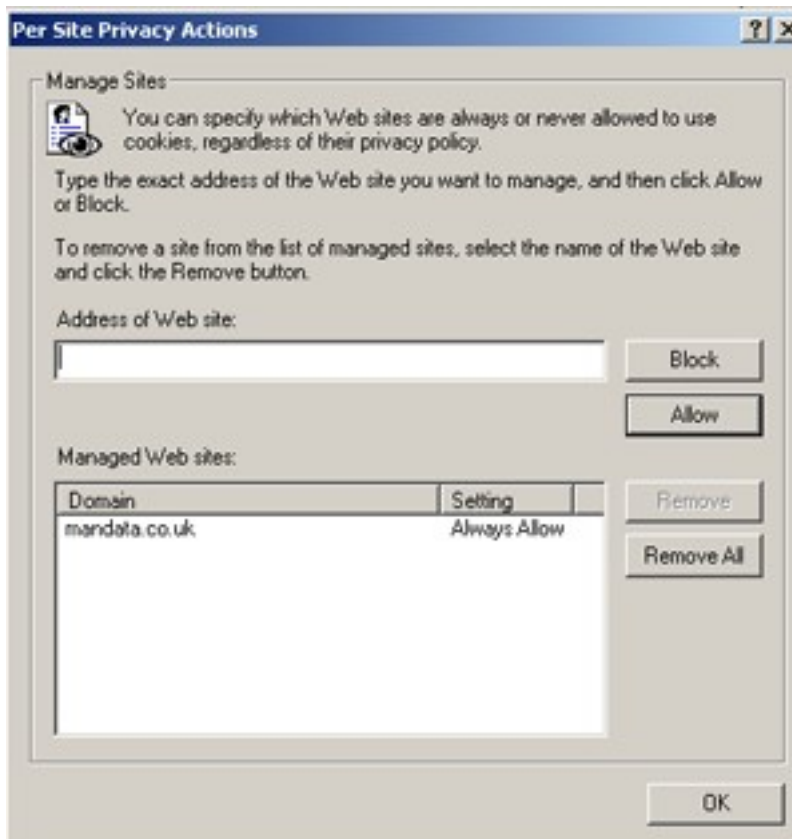
4. Select the **Privacy** tab the press the **Sites** button



5. Enter www.mandata.co.uk into the address field and press **Allow**



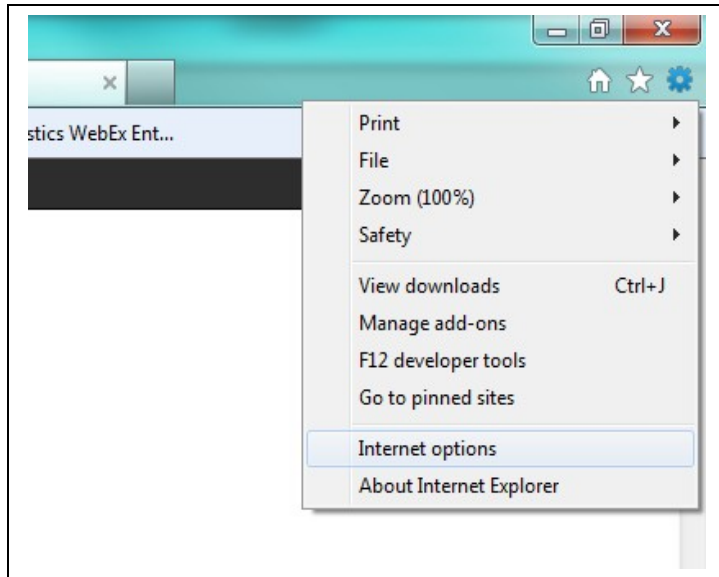
6. The address will appear in the Managed Web Sites section below



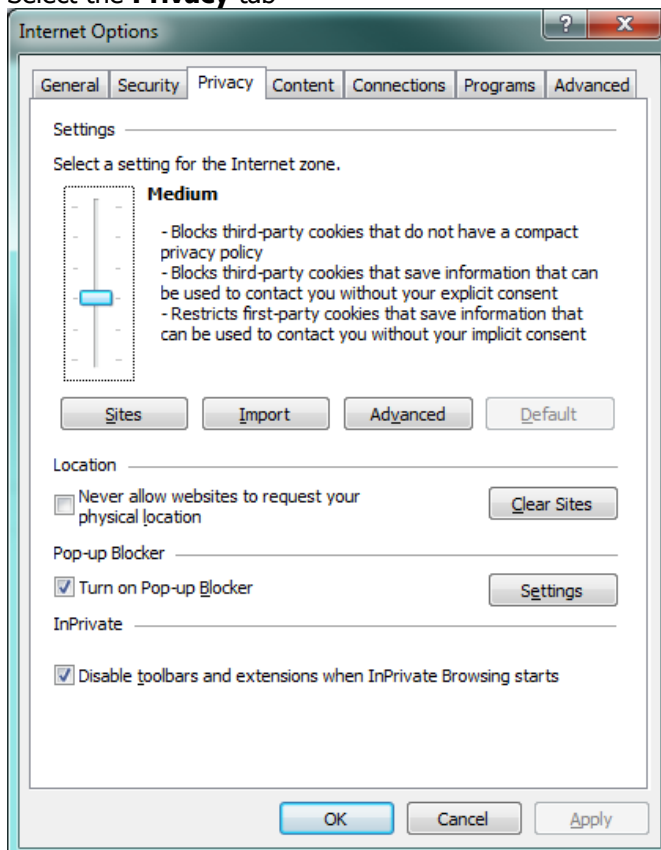
7. You may also need to add <http://as.mandata.co.uk> to the Managed Websites list. Once you have done this press **OK** then **OK** again to exit.
8. Close the browser then re-open and try to access the site again as normal.

Windows 7

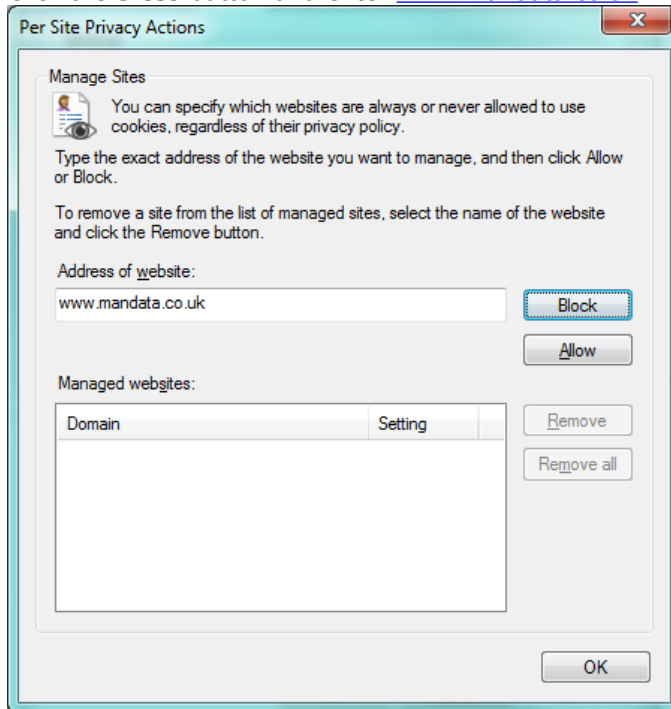
1. Open Internet Explorer
2. Click the **Tools Icon (cog)** and select **Internet Options**



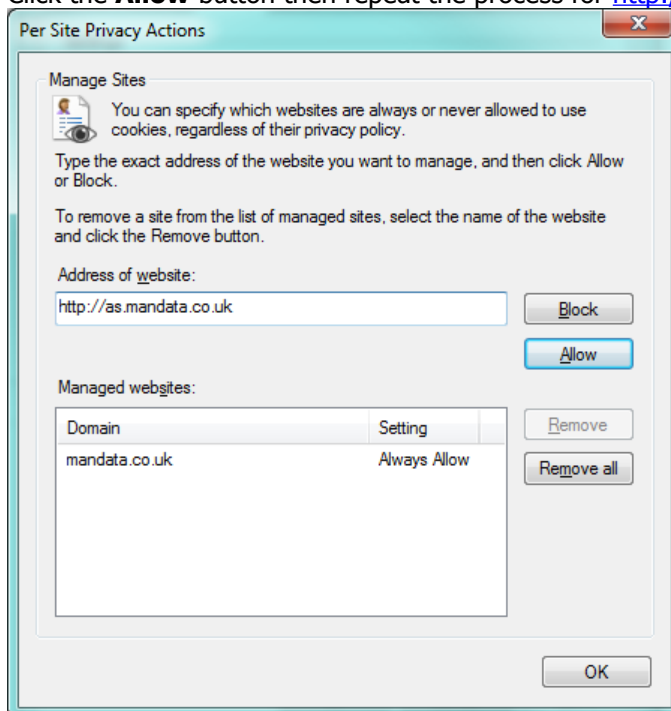
3. Select the **Privacy** tab



4. Click the **Sites** button and enter www.mandata.co.uk.



5. Click the **Allow** button then repeat the process for <http://as.mandata.co.uk>



6. Click **OK** the **OK** again to close